



## **Rabbit anti MMP-1 (Collagenase-I) Polyclonal Antibody**

**Alternative Name(s):** Matrix metallopeptidase 1

### **Order Information**

- **Description:** MMP-1 (Collagenase-I)
- **Catalogue:** 500-7964
- **Lot:** See label
- **Size:** 100ug/200ul
- **Host:** Rabbit
- **Clone:** nan
- **Application:** IHC(P), WB
- **Reactivity:** Hu

### **ANTIGEN PREPARATION**

A synthetic peptide corresponding to N-term of human MMP-1.

### **BACKGROUND**

The matrix metalloproteinase (MMP) are proteolytic enzymes involved in the breakdown of extracellular matrix in normal physiological processes, such as embryonic development, reproduction, and tissue remodeling, as well as in disease processes, such as arthritis and metastasis. Most MMP's are secreted as inactive proproteins which are activated when cleaved by extracellular proteinases. Imbalanced secretion of certain MMP or disturbances in the differential control of MMP by tissue inhibitor of MMPs (TIMPs) are implicated in the invasive potential of malignant tumors. MMP1 is involved in breaking down the interstitial collagens, types I, II, and III.

### **PURIFICATION**

The Rabbit IgG is purified by Epitope Affinity Purification

### **FORMULATION**

This affinity purified antibody is supplied in sterile Phosphatebuffered saline (pH7.2) containing antibody stabilizer

### **SPECIFICITY**

This antibody recognizes human MMP-1 protein (Interstitial collagenase/ gelatinase A). This antibody reacts with human, rat and mouse. The other species are not tested.

### **STORAGE**

The antibodies are stable for 24 months from date of receipt when stored at -20oC to -70oC. The antibodies can be stored at 2oC-8oC for three month without detectable loss of activity. Avoid repeated freezing-thawing cycles.

### **APPLICATIONS/SUGGESTED WORKING DILUTIONS\***

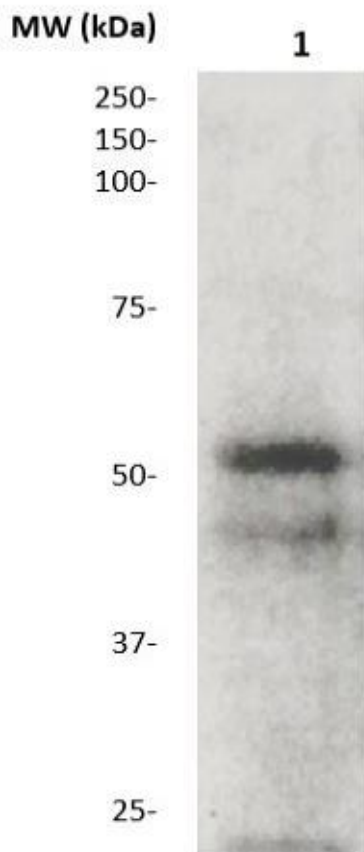
- Western Blot: 0.1-1 µg/ml
- ELISA: 0.01-0.1 µg/ml
- Immunoprecipitation: 2-5 µg/ml
- IHC: 2-10 µg/ml
- Flow cytometry: Not tested
- Molecular Weight: 52.0
- Positive Control: Kidney Tissue
- Cellular Location: Cell Membrane

\*Optimal dilutions should be determined by researchers for the specific applications.

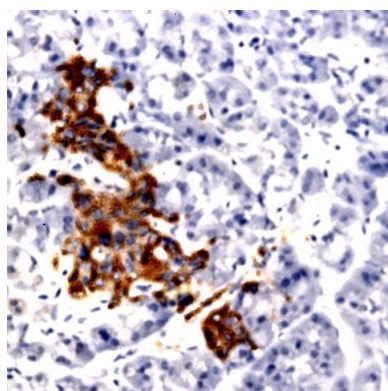
### **FOR RESEARCH USE ONLY.**

AbboMax, Inc 2528 Qume Drive, Suite 8, San Jose, California 95131, USA  
1 408-573-1898 (Tel). 1 408-573-1858 (Fax). [www.abbomax.com](http://www.abbomax.com) [info@abbomax.com](mailto:info@abbomax.com)

## DATA ATTACHMENTS



Western Blot: The cell lysate derived from PMA-stimulated A431 was resolved onto 10% SDS-PAGE, transferred onto NC membrane, and immunoprobed by Rabbit anti-MMP-1 (Cat#500-7964) at 1:500. Observed a major immunoreactive band at molecular weight ~52kDa.



Immunohistochemistry: Human placenta (FFPE) stained with Rabbit Anti-MMP-1 antibody (Cat# 500-7964) at 1:100 for 10 min @ RT. Staining of formalin-fixed tissue requires boiling tissue sections in 10 mM Citrate Buffer, pH 6.0 for 10 min followed by cooling at RT for 20 min.

## REFERENCES

### FOR RESEARCH USE ONLY.

AbboMax, Inc 2528 Qume Drive, Suite 8, San Jose, California 95131, USA  
1 408-573-1898 (Tel). 1 408-573-1858 (Fax). [www.abbomax.com](http://www.abbomax.com) [info@abbomax.com](mailto:info@abbomax.com)